



Sensor Options

- All-In-One Weather Station (measures wind speed, direction and peak wind, rainfall, barometric pressure, temperature, and relative humidity)
- Rain Gauge Tipping Bucket option
- Pressure Transducer, includes water temperature (freeze resistant)
- 2 Float Switches
- Solar Radiation
- Fuel Moisture/Temperature

StormLink® Monitoring Station

An easily deployable automated early warning system for remote real-time environmental, weather and hydrologic monitoring

KEY FEATURES

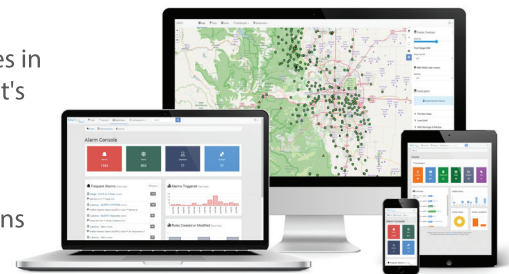
- **Flexible communication options.** Transmits data via cellular, IP or OneRain's turnkey StormLink Satellite solution.
- **Multi-sensor suite.** Sensors are quick-connected (6 ports) and can be switched out as needed for each application.
- **Fast and easy setup.** Station mounts to a post or tripod for short- or long-term deployments.
- **Low power consumption.** Powered by either a solar panel and battery, or an AC charger.
- **Event-driven and time series data reporting**—options for user-defined thresholds and configurable data reporting to suit your application demands.

Reliable Data Delivery to Support Decision Making

The **StormLink Monitoring Station** combined with OneRain's **Contrail** software application provides 24x7 real-time data collection, processing, and secure web-accessible visualization and decision management. Reliable data delivery to Contrail guarantees that transmitted data are received and real-time assessment of user-defined criteria are tested for alarm conditions.

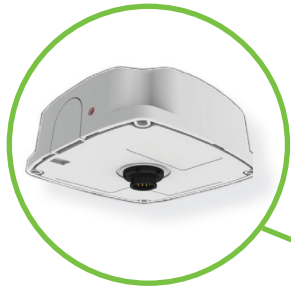
Create logic-based advanced alarm rules in Contrail to track critical information that's important to you and automatically send custom and detailed notifications via e-mail and/or text to any person or group to alert about changing conditions or threatening events.

Housed in a rugged, weatherproof, all-in-one data collection control unit, the StormLink Monitoring Station is ideal for deployment in remote geographic locations or difficult terrains requiring real-time weather or other environmental monitoring.



APPLICATIONS

- Remote unattended real-time environmental monitoring
- Post-wildfire burn scar areas for flood monitoring and early warning
- High-hazard and significant-hazard safety of dams monitoring programs
- Oil, gas, mineral and mining industries for automated remote sensor data collection, monitoring and alarm notifications
- Reservoir and hydropower operations
- Other environmental, weather, hydrological and water management areas



StormLink satellite transceiver
mounts on top of station



6 Quick-Connect Sensor Ports



StormLink® Satellite Option

For locations where cellular or IP is unavailable, OneRain offers a complete turnkey satellite solution with the StormLink Monitoring Station that includes airtime data services.

A StormLink handshaking protocol between the satellite messaging terminal and **Contrail** guarantees data delivery. If acknowledgement of data receipt is not received by the satellite messaging terminal, it resends the information.

StormLink's satellite transceiver uses the L-band for communication and is thus not prone to rain fade during the very time when you may need your data the most.

Data transmission is via the Inmarsat I-4 satellite network service, a robust, secure and stable network. Messages are packetized and time-stamped prior to satellite transmission. The communications channel is two-way; data are buffered locally for possible retransmission until acknowledgment of correct receipt has been received.

The StormLink satellite transceiver is typically mounted on top of the station (as shown). For indoor installations, a 10-meter cable is available to allow the satellite transceiver to be mounted outdoors with a view to the sky.

*StormLink® Satellite transfers
data to Contrail® within just 20
seconds—and guarantees delivery.*

OneRain
The Rainfall Company

Copyright © 2018, OneRain Incorporated. All rights reserved. This document is provided for information purposes only and the contents hereof are subject to change without notice. Rev 1.2

T: +1-303-774-2033
Toll Free: 800-758-RAIN (7246)
Email: sales@onerain.com
www.onerain.com



Experts measuring rainfall and its consequences™