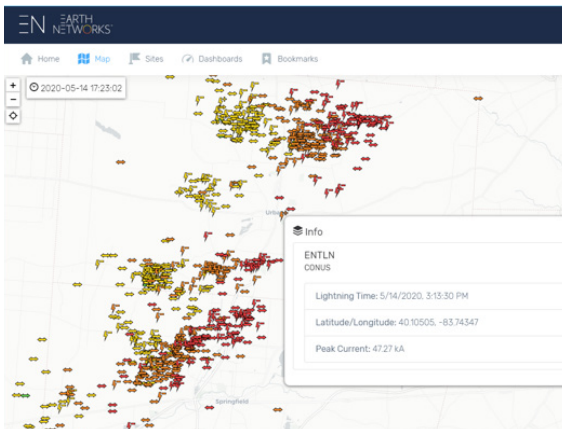




Lightning Weather Services in Contrail®

Integrated real-time lightning data in Contrail powered by Earth Networks – the world’s largest lightning detection network

Lightning data by Earth Networks, available as an add-on in OneRain’s Contrail software, enables lightning map layers, table and graph data displays, and dangerous lightning storm indicators.



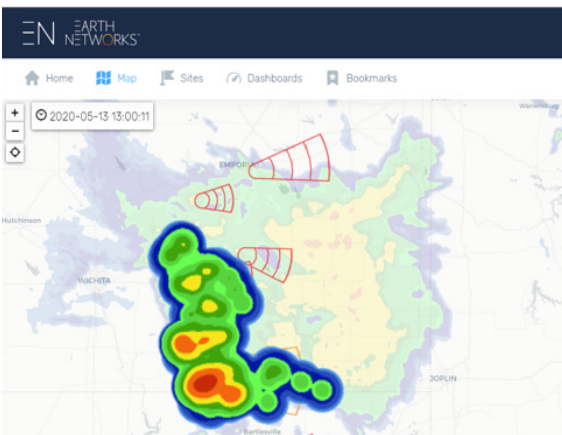
COMPLETE YOUR SEVERE WEATHER PICTURE

Severe convective storms and in-cloud lightning strikes usually serve as an early indicator of extreme weather—from intense heavy rainfall and hail, to dangerous cloud-to-ground lightning strikes and tornadoes. Now you can track dangerous storms that are likely to produce severe weather and provide advance early warnings.

For complete situational awareness, combine lightning data observations displays and dashboards along with up-to-the minute data from other sources, such as local proprietary hydrological and meteorological networks, USGS, HADS, METAR, and more. All Lightning data by Earth Networks can be included in Contrail thresholds, dashboards, and both simple and complex alarms.

FEATURES

- ✓ Real-time storm tracking
- ✓ Lightning location. Identify and visualize where there are lightning-producing storms
- ✓ Real-time alerting for in-cloud or cloud-to-ground lightning within any radius. You decide: 25, 15, 10, 5... miles
- ✓ Visual mapping of Dangerous Thunderstorm Alerts
- ✓ Storm ETA mapping - know when a storm is going to arrive at a certain location. (Earth Networks lightning alert lead times are detected earlier than the NWS*)
- ✓ Flash densities, flash rates, direction of cells, track storm movements
- ✓ History of flash rates, activities



* Earth Networks proprietary sensor technology used by their Total Lightning Network significantly improves weather warning times by up to 30 minutes or more.



ALARMS + NOTIFICATIONS

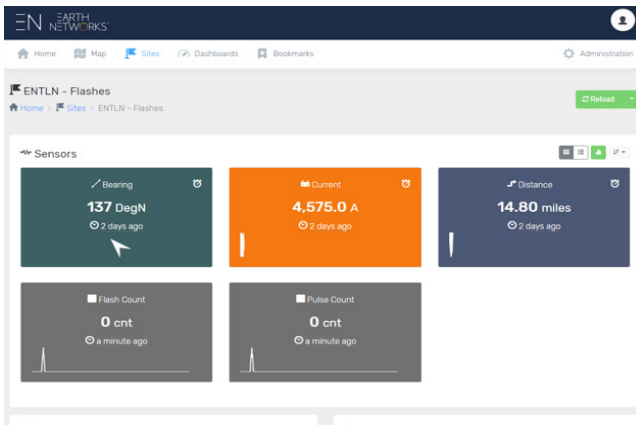
Combine lightning data and other sensor data to create simple or complex custom alarm rules in Contrail® to deliver early warning notifications by e-mail, text, or SMS.

Lightning within 15 miles

Home > Administration > Alarms > Rules > Lightning within 15 miles (11606)

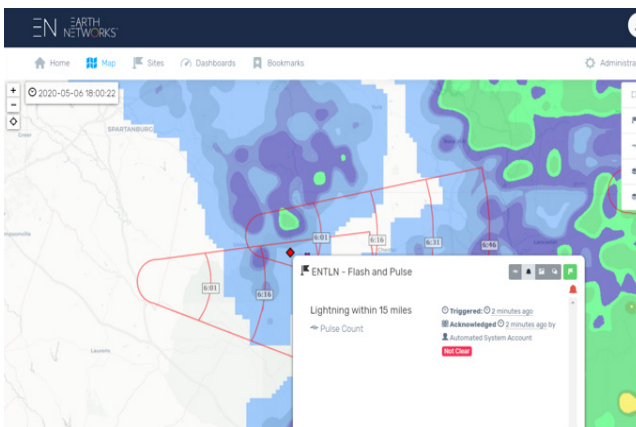
Rule

Rule	11606
Site	MAZ (4)
Level	Warning
Sensor	Pulse Count (p-count)
Auto Acknowledged	On



EARTH NETWORKS® DID YOU KNOW?

Earth Networks Total Lightning Network (ENTLN) has over 1,800+ sensors in 40+ countries around the world. The network is the most extensive and technologically advanced global lightning network.



OneRain
The Rainfall Company

Headquarters

1531 Skyway Drive, Unit D
Longmont, Colorado 80504, USA

T: +1 303-774-2033

Toll Free (US): 1 800-758-RAIN (7246)

Email: sales@onerain.com

www.onerain.com

Copyright © 2021, OneRain Incorporated. All rights reserved. This document is provided for information purposes only and the contents hereof are subject to change without notice. Rev. 1.2

OneRain and Earth Networks are part of AEM – a family of innovators focused protecting lives, property, and the environment, enabling better decisions.