

Contrail® Camera

Gain Greater Visual Insights and Situational Awareness with Remote Monitoring

Create a more complete view of conditions with **Contrail Camera** image collection, hosting, and viewing platform. Whether you have existing cameras, or are planning to add them, Contrail Camera provides you with enhanced information and valuable insights for situational awareness.

Seamless Integration with Contrail Enterprise Software Suite

Contrail Camera is OneRain's centralized Web-based image storage and management tool that provides secure, 24x7 password-protected access to view and manage images. It easily integrates with our flagship **Contrail Enterprise** software suite where you can incorporate images into Contrail Dashboards and Map Layers to show sensor data and images side-by-side.

Visually represented sensor data in maps, charts, graphs, widgets and dashboards has become one of the most effective ways for users to assimilate large volumes of data in **Contrail Enterprise**. Combining this data with access to live cameras provides a very quick understanding of an event as it is occurring and can help users improve their situation awareness.

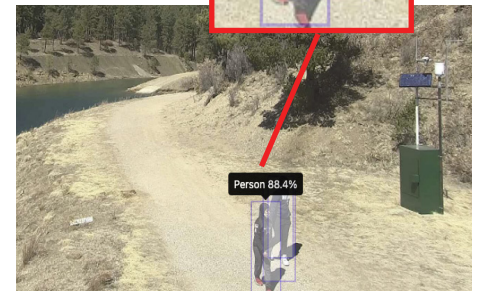
The full-featured **Vision license** combines our Contrail Camera framework with machine learning models to detect objects in each image.



Vehicle detection on flooded roadways with Vision



Vehicle detection on dam with Vision



Person detection at a dam site with Vision

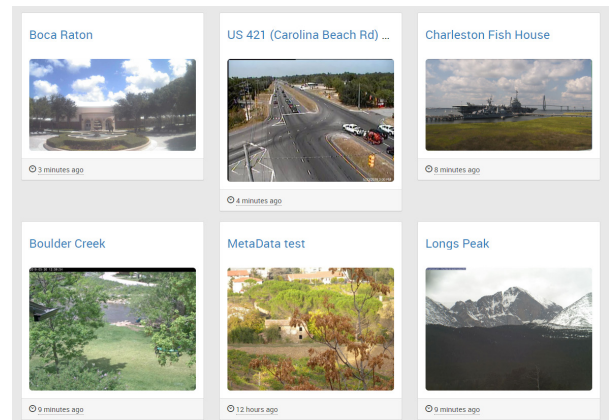
LICENSE OPTIONS

Choose from 3 Contrail Camera License types. License is per device, per year:

- **Contrail Camera Basic**
- **Contrail Camera Standard**
- **Contrail Camera Vision**

SEE OVER FOR FEATURES ►

With the **Vision license**, users can turn on a machine learning model that has predefined tags for each camera location. The system will then detect objects in each image, including person, cars, trucks, trees, etc. **Contrail Enterprise** users can create custom Alerts and Notifications based on AI-detected objects. These capabilities are incredibly useful for camera applications where you need to know if a car has driven into a flooded roadway, or a person is walking on a dam, for example. A rectangle overlay on each image indicates what the machine learning model has detected and the confidence level it determines for the particular classification.





Features by License Type

	BASIC	STANDARD	VISION
Integration with Contrail® Enterprise software suite	√	√	√
24/7 access and management via any web-enabled device	√	√	√
Collect images via FTP or Web-accessible resources	√	√	√
Views: Tile, list, mosaic, full screen, slideshow and album	√	√	√
Integration with StormLink® Camera		√	√
Display images on Contrail Enterprise Map and Dashboards	√	√	√
Image Download: Select multiple images and dates with calendar to download images over a time period	√	√	√
Camera API access	√	√	√
Maximum image retention	72 hours	60 days	60 days
Image frequency	15-minute	5-minute	5-minute
Maximum image resolution (horizontal x vertical pixels)	1280 x 720	1920 x 1080	1920 x 1080
24-hour time lapse	√	√	√
Daily movie		√	√
Download daily movie		√	√
Historical snapshot movie		√	√
Artificial Intelligence (AI) object detection capabilities			√
Custom alarming on AI-detected objects			√
Integration of AI detection information into Contrail Enterprise and Dashboards			√

APPLICATIONS

- Flood Early Warning
- Reservoir and Hydropower operations
- High risk/remote Dams Safety Monitoring programs
- Road Weather
- Flooded Roadways
- Post-wildfire burn areas for flood early warning
- Other environmental monitoring



Ask us about our StormLink® Camera hardware solutions for your application.

OneRain
The Rainfall Company